

Active Recombinant Human CD3E & CD3G protein, His & Fc & Flag-tagged

Cat. No. CD3E & CD3G-342H **Lot. No.** (See product label)

SPECIFICATION

Product Overview	Human CD3 epsilon & CD3 gamma is expressed from human 293 cells (HEK293). It contains AA Asp 23 - Asp 126 (CD3E) & Gln 23 - Ser 116 (CD3G) (Accession # NP_000724.1 (CD3E) & AAI13831 (CD3G)).
Species	Human
Source	HEK293
ProteinLength	Asp 23 - Asp 126 (CD3E) & Gln 23 - Ser 116 (CD3G)
Description	T-cell surface glycoprotein CD3 delta & CD3 gamma chain, also known as CD3D & CD3G or CD3D&CD3G respectively, are single-pass type I membrane proteins. CD3D, together with CD3- epsilon(CD3E) , CD3-gamma and CD3-zeta, and the T-cell receptor alpha/beta and gamma/delta heterodimers, forms the T cell receptor-CD3 complex. T cell receptor-CD3 complex plays an important role in coupling antigen recognition to several intracellular signal-transduction pathways.
Predicted N Terminal	Asp 23 (CD3E) & Gln 23 (CD3G)
Form	Lyophilized from 0.22 µm filtered solution in PBS, pH7.4, 10% trehalose.
Bio-activity	Immobilized Anti-CD3E & CD3G MAb, Mouse IgG2a at 10µg/mL (100 µL/well) can bind Human CD3E & CD3G with a linear range of 0.3-5 µg/mL.

 Tel: 1-631-559-9269 1-516-512-3133

 Email: info@creative-biomart.com  Fax: 1-631-938-8127

 45-1 Ramsey Road, Shirley, NY 11967, USA

Molecular Mass	The heterodimer Human CD3 epsilon & CD3 gamma is produced by co-expression of CD3E and CD3G, has a calculated MW of 39.2 kDa (CD3E) and 38.6 kDa (CD3D). Subunit CD3E is fused with a human IgG1 Fc tag at the C-terminus, followed by a polyhistidine tag, and subunit CD3G is fused with a human IgG1 Fc tag at the C-terminus, followed by a Flag tag. The reducing (R) heterodimer protein migrates as 40-50 kDa due to glycosylation.
Endotoxin	Less than 1.0 EU per µg by the LAL method.
Purity	>95% as determined by SDS-PAGE.
Storage	For long term storage, the product should be stored at lyophilized state at -20°C or lower. Please avoid repeated freeze-thaw cycles. No activity loss is observed after storage at: 4-8°C for 12 months in lyophilized state; -70°C for 3 months under sterile conditions after reconstitution.
Storage buffer	PBS, pH7.4
Reconstitution	It is recommended that sterile water be added to the vial to prepare a stock solution of 0.2 ug/ul. Centrifuge the vial at 4°C before opening to recover the entire contents.
Shipping	Powder,RT

GENE INFORMATION

Gene Name	CD3D CD3d molecule [Homo sapiens (human)]
Official Symbol	CD3E; CD3G
Synonyms	T3D; IMD19; CD3-DELTA; CD3 antigen, delta subunit; CD3 delta; CD3d antigen, delta polypeptide (TiT3 complex); CD3d molecule, delta (CD3-TCR complex); OKT3,

 Tel: 1-631-559-9269 1-516-512-3133

 Email: info@creative-biomart.com  Fax: 1-631-938-8127

 45-1 Ramsey Road, Shirley, NY 11967, USA

delta chain; T-cell receptor T3 delta chain; T3G; IMD17; CD3-GAMMA; CD3G; CD3g antigen, gamma polypeptide (TiT3 complex); CD3g molecule, epsilon (CD3-TCR complex); CD3g molecule, gamma (CD3-TCR complex); T-cell antigen receptor complex, gamma subunit of T3; T-cell receptor T3 gamma chain

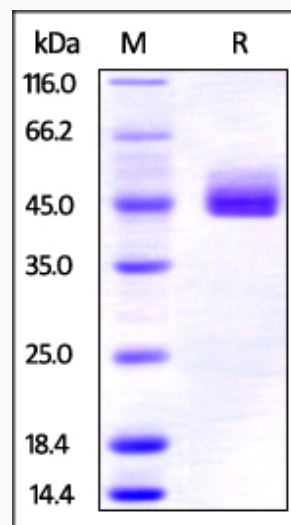
Gene ID 915

mRNA Refseq [NM_000732.4](#)

Protein Refseq [NP_000723.1](#)

UniProt ID [P04234](#)

SDS-PAGE



Human CD3 epsilon & CD3 gamma on SDS-PAGE under reducing (R) condition. The gel was stained overnight with Coomassie Blue. The purity of the protein is greater than 95%.

 Tel: 1-631-559-9269 1-516-512-3133

 Email: info@creative-biomart.com  Fax: 1-631-938-8127

 45-1 Ramsey Road, Shirley, NY 11967, USA